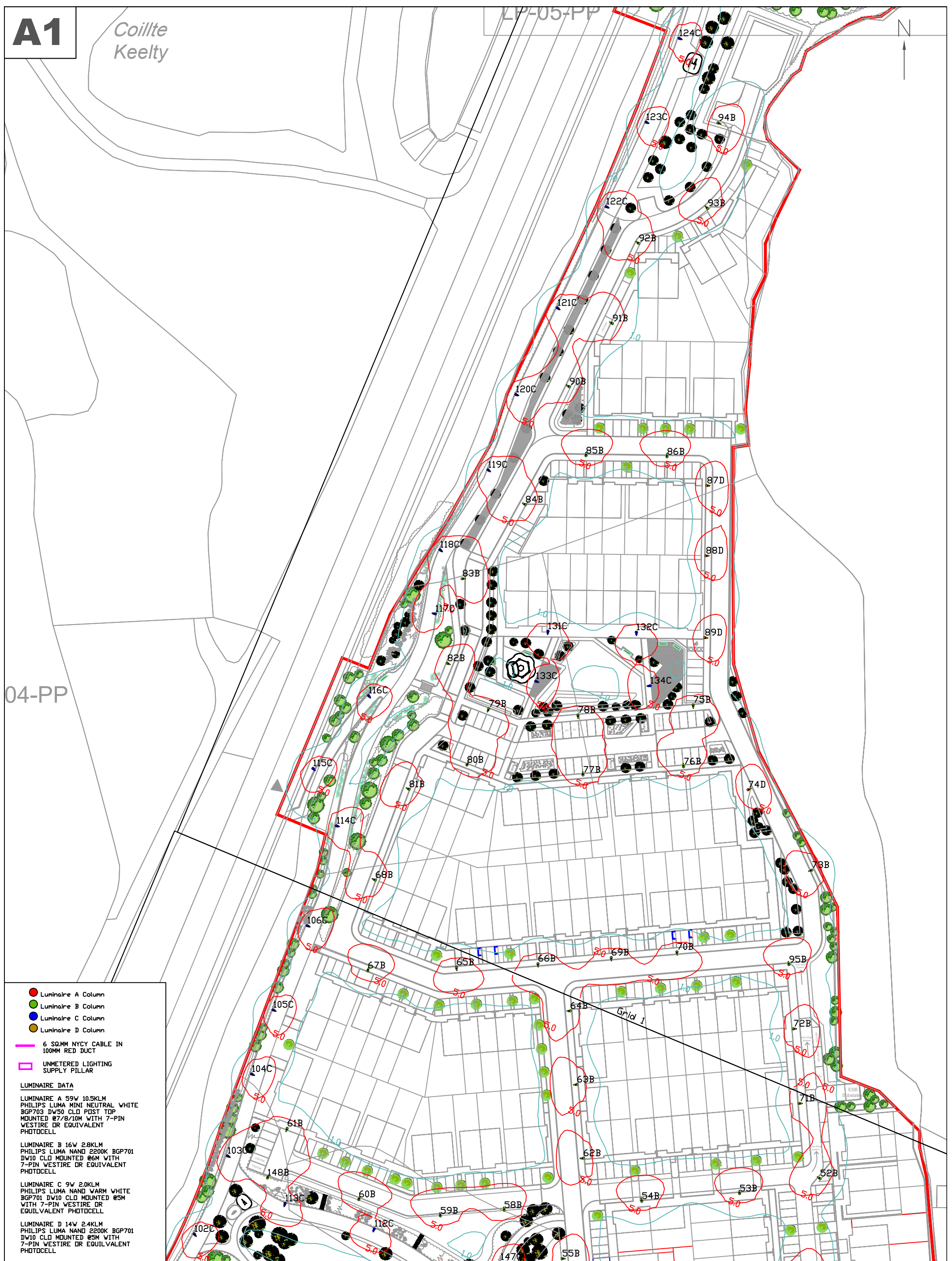




04-PP



- Luminaire A Column
- Luminaire B Column
- Luminaire C Column
- Luminaire D Column
- 6 SQ.MM NYCY CABLE IN 100MM RED DUCT
- UNMETERED LIGHTING SUPPLY PILLAR

**LUMINAIRE DATA**

**LUMINAIRE A** 59W 10.5KLM  
PHILIPS LUMA MINI NEUTRAL WHITE  
BGP703 DW50 CLD POST TOP  
MOUNTED @7/8/10M WITH 7-PIN  
VESTIRE OR EQUIVALENT  
PHOTOCCELL

**LUMINAIRE B** 16W 2.8KLM  
PHILIPS LUMA NANO 2200K BGP701  
DW10 CLD MOUNTED @6M WITH  
7-PIN WESTIRE OR EQUIVALENT  
PHOTOCCELL

**LUMINAIRE C** 9W 2.0KLM  
PHILIPS LUMA NANO WARM WHITE  
BGP701 DW10 CLD MOUNTED @5M  
WITH 7-PIN WESTIRE OR  
EQUIVALENT PHOTOCCELL

**LUMINAIRE D** 14W 2.4KLM  
PHILIPS LUMA NANO 2200K BGP701  
DW10 CLD MOUNTED @5M WITH  
7-PIN WESTIRE OR EQUIVALENT  
PHOTOCCELL



REVISION	INFORMATION 4
1	22/06/2022
2	1:1000-A1
3	James Molloy Jnr
4	James Molloy Sr

**MOLLOY CONSULTING ENGINEERS**  
Cahercalla Road,  
Ennis,  
Co.Clare.  
Tel: 065-6891950, Mob: 086-3152764, Email: james@molloycolling.ie

TITLE	CLIENT	PROJECT	DWG NO.
Public Lighting Layout 2	Glenveagh Properties PLC.	Proposed Development, Circular Rd, Ennis, Co. Clare.	PL2189-E-101-14